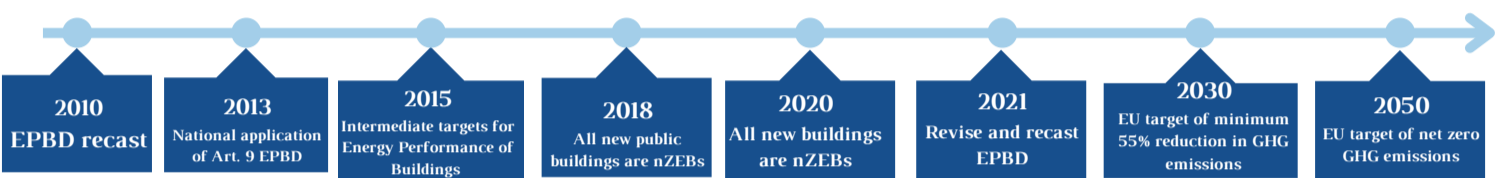
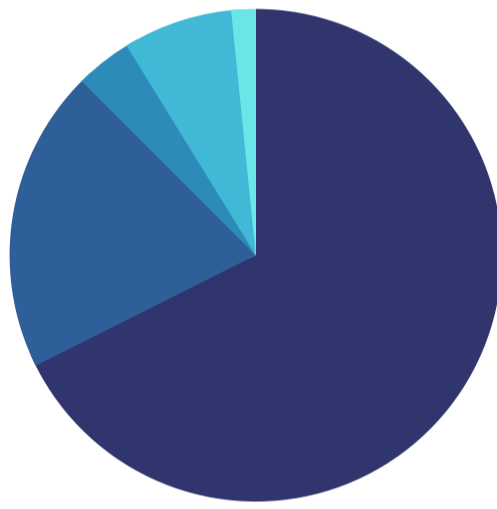


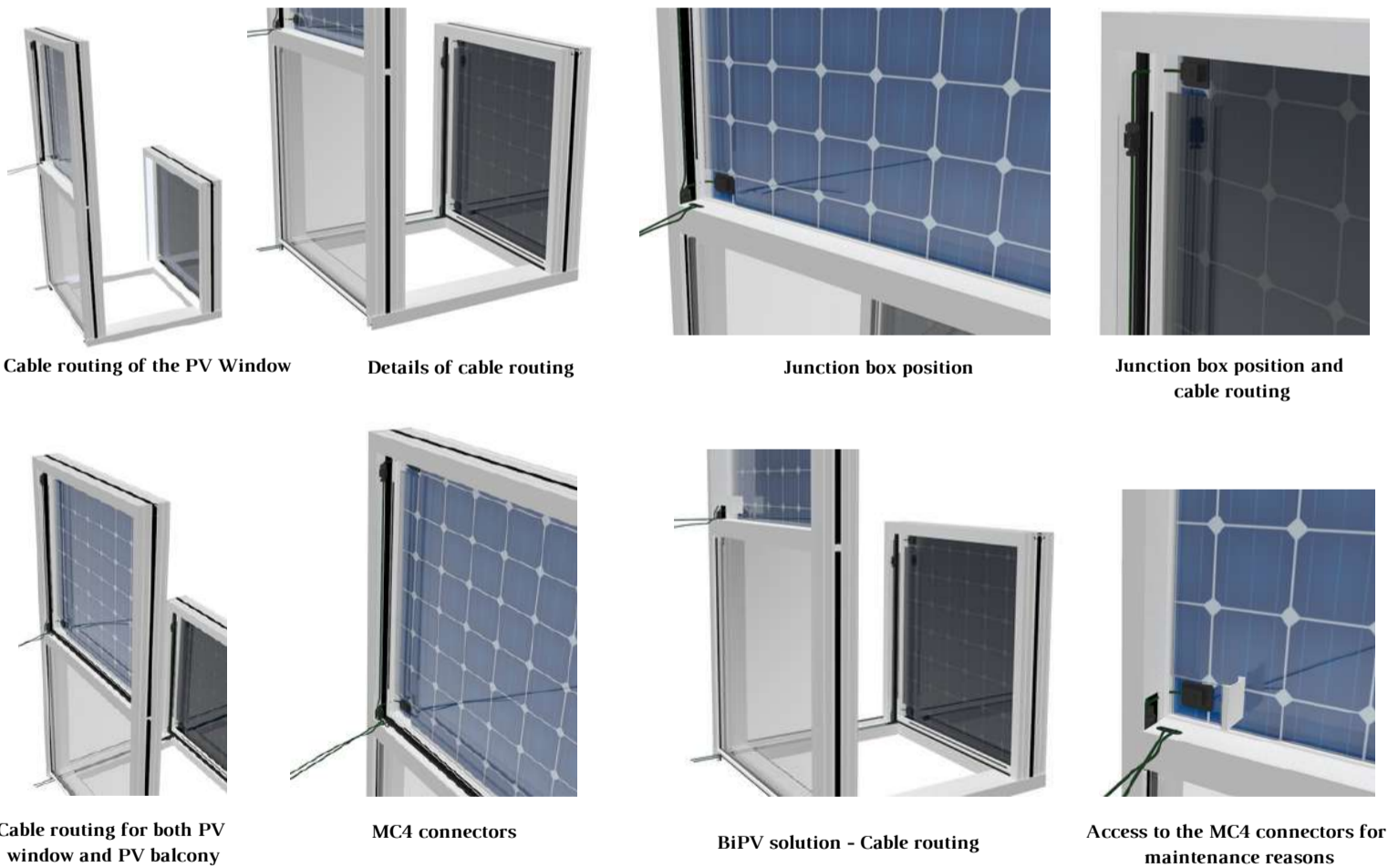
## Timeline for NZEBs implementation



## Building permit share in Cyprus

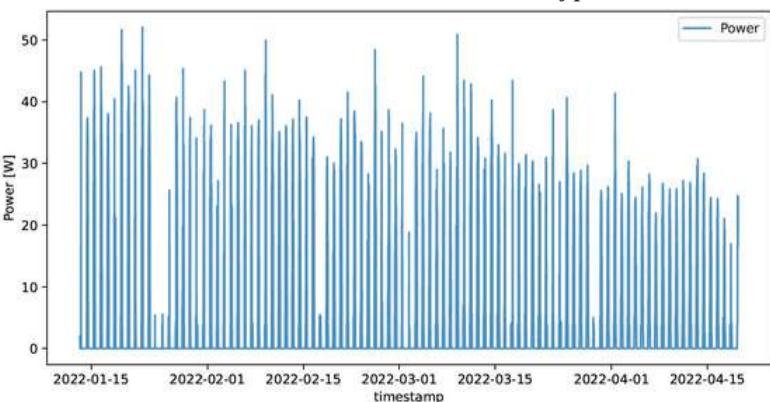


## ImpAct-BiPV Solution



## Measurements from the ImpAct-BiPV pilot site

**Figure 1:** Instantaneous power measurements from the installed BiPV modules recorded over the period January - April 2022. The performance of the modules during the first months of operation showed a reduction over time which is largely attributed to the change of the angle-of-incidence as we move from winter to summer time in Cyprus.



**Figure 2:** Weekly average performance ratio (PR) for the system. The gradual reduction indicates that the system is undergoing degradation outdoors.

